

Blixer® 5 / 5 V.V. / 7 / 7 V.V.

Consignes de sécurité et d'utilisation / Safety and Operating Instructions
 Veiligheidsvoorschriften en gebruiksaanwijzing / Sicherheits- und Bedienungshinweise

À FIXER AU MUR.
 HANG ON THE WALL.
 AAN DE WAND TE BEVESTIGEN.
 AN DER WAND ZU BEFESTIGEN.




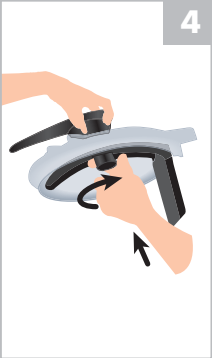




robot coupe®
 www.robot-coupe.com


Tableau de commande / Control Panel / Bedieningspaneel / Bedienfeld


 Bouton Pulse Pulse button Pulse Momentschalter	 Bouton marche ou Vitesse 1 On button or 1 speed Aan knop of Snelheid 1 Ein Taste oder Drehzahl 1	 Bouton vitesse 2 Switch speed 2 Knop snelheid 2 Taste Drehzahl 2
1 V.		
 Bouton Arrêt Power Off Button UIT Ausschalttaste	 Variateur de vitesses Speed variator Toerenregelaar Drehzahlregler	 Minuterie Timer Timer Zeitschalter
V.V.		

Mise en marche et utilisation / Switching on and using the mixer / Inwerkingstelling en gebruik / Inbetriebnahme und Bedienung


1 V


2 V


V.V.

Nettoyage et entretien / Cleaning and maintenance / Reiniging en onderhoud / Reinigung und Wartung





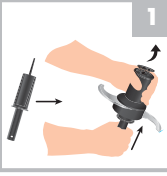
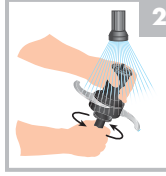
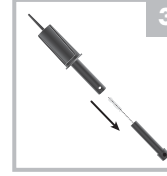
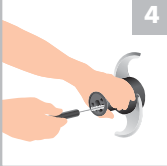


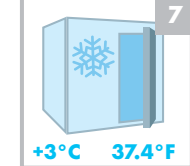

Cuve / Bowl / Kuip / Schüssel





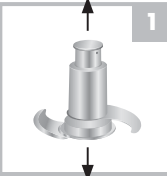
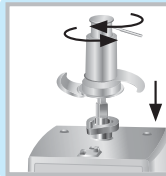
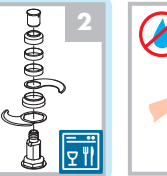
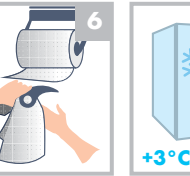

+3°C 37.4°F

BLIXER 5/BLIXER 7 Couteau / Blade / Mes / Messer

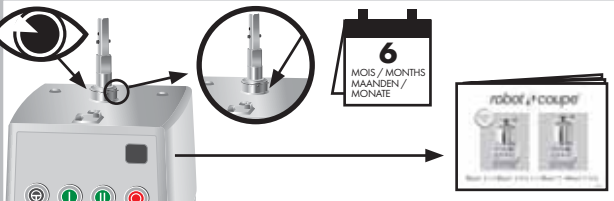
+3°C 37.4°F

BLIXER 7 (option / option / optie / option)



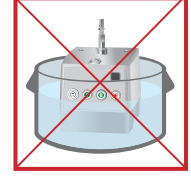




+3°C 37.4°F

Bague d'étanchéité / O-ring (seal) / Afdichtingsring / Dichtungsring



6 MOIS / MONTHS
 MAANDEN /
 MONATE

Sécurité / Safety Veiligheid / Sicherheit

Ne jamais essayer de supprimer les systèmes de verrouillage et de sécurité. / Never try to remove the locking and safety systems. / Probeer nooit de vergrendelings-en beveiligingssysteem buiten werking te stellen. / Niemals versuchen, die Verriegelungs- oder Sicherheitsvorrichtungen zu umgehen.

Blixer® 5 / 5 V.V. / 7 / 7 V.V.

Consignas de seguridad y empleo / Instruções de segurança e de utilização
Istruzioni di sicurezza e d' utilizzo / Техника безопасности и руководство по эксплуатации

FIJACIÓN MURAL.
PARA AFIXAR NA PAREDE.
DA FISSARE A PARETE.
ПОВЕСИТЬ НА СТЕНУ.



robot coupe®
www.robot-coupe.com

Panel de mandos / Painel de controlo / Quadro comandi / Панель управления



Botón Pulse
Botão Pulse
Pulsante impulsì
Кнопка «Пулс»



Botón Marcha y velocidad 1
Botão Ligar ou velocidade 1
Pulsante accensione o velocità 1
Кнопка «Пуск» или скорость 1

1 V.



Botón velocidad 2
Botão velocidade 2
Pulsante velocità 2
Кнопка скорость 2

2 V.



Botón Parada
Botão Desligar
Pulsante arresto
Кнопка «Стоп»



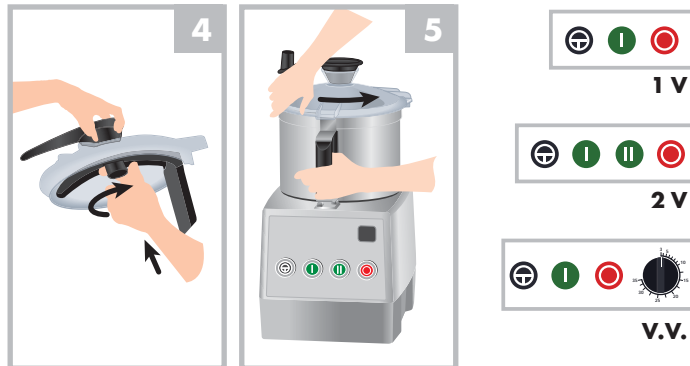
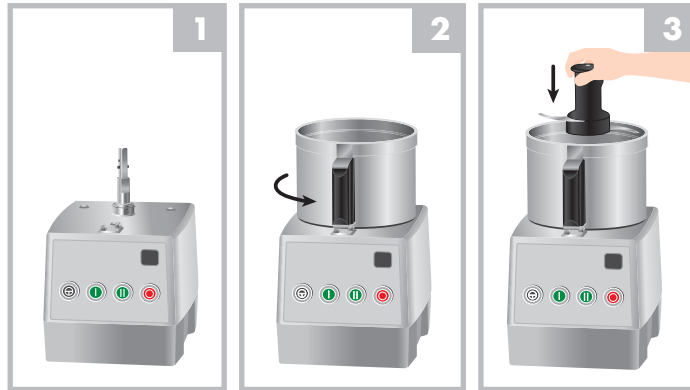
Variador de velocidades
Variador de velocidade
Variatore di velocità
Регулятор скорости

V.V.

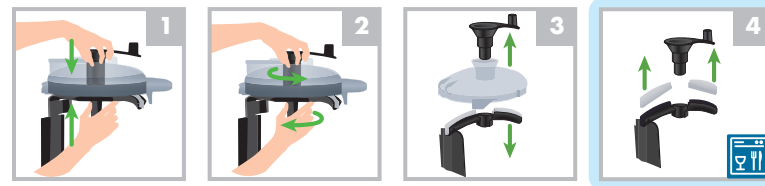


Temporizador
Temporizador
Timer
Таймер

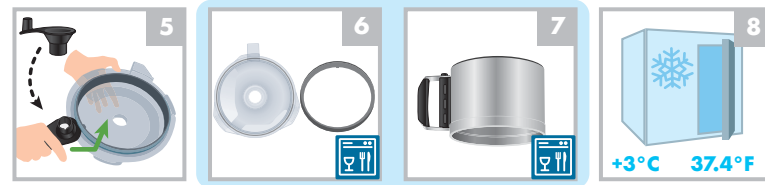
Puesta en marcha y utilización / Ligaço e utilização / Accensione e utilizzo / Включение и использование



Limpieza y mantenimiento / Limpeza e manutenção / Pulizia e manutenzione / Чистка и уход

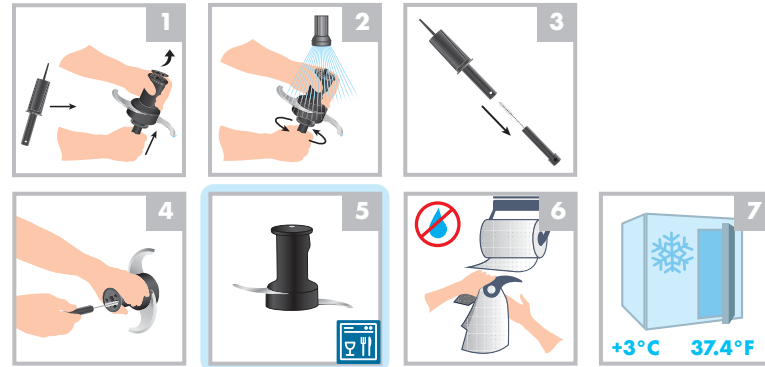


Cuba / Cuba / Vasca / Чаша

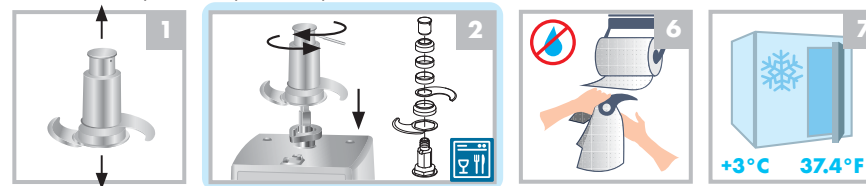


BLIXER 5/BLIXER 7

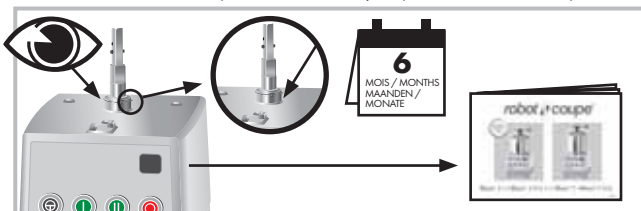
Cuchilla / Lâmina / Coltello / Нож



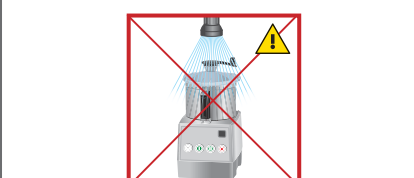
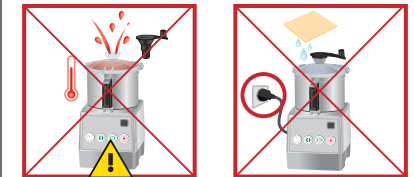
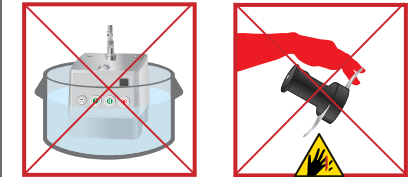
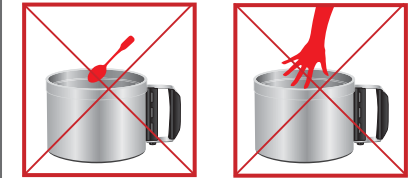
BLIXER 7 (Opción / Opção / Opzione / Опция)



Anillo de hermeticidad / Anel de vedação / Anello di tenuta / Уплотнительное кольцо



Seguridad / Segurança / Sicurezza / Безопасность



Nunca tratar de suprimir los sistemas de bloqueo y de seguridad. / Nunca tentar suprimir os sistemas de bloqueio e de segurança. / Non cercare in alcun caso di eliminare i sistemi di blocco e di sicurezza. / Никогда не отключать системы блокировки и защиты.