



G A S

E Q U

I P M

E N T

FLAME-MATE

FLAME
-MATE
COOKING
SERIES



FLAME-MATE 2.0
EXCELLENCE
THROUGH
INNOVATION

**Sustainable Development
And Enhancement**

Precision and quality remain a keystone for our collection of FLAME-MATE 2.0. Featuring premium materials, innovations and craftsmanship, our Chinese cooking lines are a class of its own.



Scan for Video

FLAME-MATE | 2.0

A Road For Quality Enhancement in All Aspects



**Advanced
Craftsmanship
& Features**

Through our dedication to R&D and with aid of machinery, we are able to enhance framework of our equipments and overcome hygiene aspect.



**Dedicated for
Professional**

Fine laser engraving artwork guarantees sleek and elegant logo design in addition to product differentiation.



**Upgraded Cooking
Features**

We focus on all round solutions from working environment to operation cost by striking a balance between chef's cooking experience and energy efficiency.



**Sustainable
Development &
Improvement**

In the coming years, it will be our oath to go further and beyond to deliver the best equipment for the food service industry.

**Why choose
Flame-Mate?**

“ We worked on every details to offer you the best cooking experience ”

“ That's the way we gain reputation from the world ”

**Environmental Cooking Range -
Back of House**



ECR-1-GF(E)5 / ECR-1-NF(E)5
/ ECR-1-MF(E)5



ECR-2-GF(E)5 / ECR-2-NF(E)5 /
ECR-2MF(E)5



ECR-1-SF(E)5 / ECR-1-RF(E)5



ECR-2-SF(E)5



¹ Optional flat ring for Shanghai
Style wok range specially
designed for 14"-16" wok.

	Code	Dimension (mm)	Inner Ring Size	Wok Size	No. of Main burner (kW)	No. of Stock Pot Stove (kW)	No. of Rear Burner (kW)	No. of Rear Pot	Gas (kW)
Guangdong	ECR-1-GF(E)5	1200 x 1250 x 810+360	Ø13.5"	18" - 24"	1	0	0	1	48
	ECR-2-GF(E)5	2200 x 1250 x 810+360		18" - 24"	2	0	0	2	96
	ECR-1-NF(E)5	1200 x 1050 x 810+360	Ø13"	18" - 22"	1	0	0	1	48
	ECR-2-NF(E)5	2200 x 1050 x 810+360		18" - 22"	2	0	0	2	96
Banquet	ECR-1-MF(E)5	1200 x 1250 x 810+360	Ø16"	24" - 28"	1	0	0	1	48
	ECR-2-MF(E)5	2200 x 1250 x 810+360		24" - 28"	2	0	0	2	96
Shanghai	ECR-1-SF(E)5	1400 x 1250 x 810+360	Ø13"	18 - 22"	1	0	1	1	53
	ECR-2-SF(E)5	2400 x 1250 x 810+360		18 - 22"	2	0	2	2	106
	ECR-1-SF(E)5P ¹	1400 x 1250 x 810+360	Ø12"	14 - 16"	1	0	1	1	53
	ECR-2-SF(E)5P ¹	2400 x 1250 x 810+360		14 - 16"	2	0	2	2	106
	ECR-1-RF(E)5	1400 x 1050 x 810+360	Ø13"	18 - 22"	1	0	1	1	53
ECR-2-RF(E)5	2400 x 1050 x 810+360	18 - 22"		2	0	1	2	101	



ECR-2-CF(E)5



ECR-1-BF(E)5



ECR-2-BF(E)5



ESR-1-HF(E)



ESR-2-HF(E)

	Code	Dimension (mm)	Inner Ring Size	Wok Size	No. of Main burner (kW)	No. of Stock Pot Stove (kW)	No. of Rear Burner (kW)	No. of Rear Pot	Gas (kW)
Chiu Chow	ECR-2-CF(E)5	2500 x 1250 x 810+360	Ø13"	18" - 24"	2	1	0	2	110
Large Wok	ECR-1-BF(E)5	1200 x 1250 x 810+360	-	32"	1	0	0	0	48
	ECR-2-BF(E)5	2200 x 1250 x 810+360		32"	2	0	0	0	96
Chop Suey	ESR-1-HF(E) ²	760 x 900 x 810+360	Ø12.5"	14-16"	1	0	0	0	32
	ESR-2-HF(E) ²	1500 x 900 x 810+360		14-16"	2	0	0	0	64

¹ Optional flat ring for Shanghai Style wok (See P.6), specify when ordering

² Main burner of Chop Suey range is 32kW per head

	Voltage	IN ↓ OUT ↓	IN ↓ OUT ↓ LPG / Natural Gas	IN ↓ OUT ↓ Town Gas	Certification
1 head	220V/SPN/130W	DN15	DN40	DN20	DN25
2 heads	220V/SPN/130W x 2	DN15	DN40	DN40	DN40

Please refer to P.171-172 for corresponding certification model

*Environmental Cooking Range -
Front of House*



ECR-2-PF(E)5



ECR-2-LF(E)5



All show kitchen models come with deck mount faucet and full louver panel to match kitchen design. Plinth option is available upon request.

	Code	Dimension (mm)	Inner Ring Size	Wok Size	No. of Main burner (kW)	No. of Stock Pot Stove (kW)	No. of Rear Burner (kW)	No. of Rear Pot	Gas (kW)
Guangdong	ECR-1-LF(E)5	1200 x 1050 x 810+100	Ø13"	18" - 22"	1	0	0	1	48
	ECR-2-LF(E)5	2200 x 1050 x 810+100			2	0	0	2	96
Shanghai	ECR-1-PF(E)5 ¹	1400 x 1050 x 810+100	Ø13"	14" - 16"	1	0	1	1	53
	ECR-2-PF(E)5 ¹	2400 x 1050 x 810+100			2	0	1	2	101

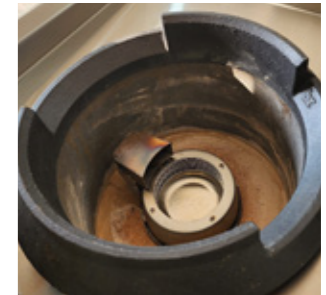
¹ Optional flat ring for Shanghai Style wok (See P.8), specify when ordering

	Voltage	IN↓	OUT↓	IN↓ LPG / Natural Gas	IN↓ Town Gas	Certification
1 head	220V/SPN/130W	DN15	DN40	DN20	DN25	<p>Please refer to P.171-172 for corresponding certification model</p>
2 heads	220V/SPN/130W x 2	DN15	DN40	DN40	DN40	

*Environmental Cooking Range -
Euro Compact*



ESR-20AC / ESR-20BC /
ESR-20CC



Detachable cast iron ring and for easy move-in with knock down pieces.

	Code	Dimension (mm)	Inner Ring Size	Wok Size	No. of Main burner (kW)	No. of Rear Burner (kW)	Gas (kW)
1 Burner	ESR-10CC	750 x 750 x 810+360	Ø12"	14-16"	1	0	25
	ESR-11CC	1100 x 750 x 810+360	Ø12"	14-16"	1	1	30
2 Burners	ESR-20CC	1500 x 750 x 810+360	Ø12"	14-16"	2	0	50
	ESR-21CC	1500 x 750 x 810+360	Ø12"	14-16"	2	1	55
	ESR-22CC	1850 x 750 x 810+360	Ø12"	14-16"	2	2	60
	ESR-21XC	1200 x 1000 x 810+360	Ø12"	14-16"	2	1	55
3 Burners	ESR-30CC	2250 x 750 x 810+360	Ø12"	14-16"	3	0	75
	ESR-32CC	2250 x 750 x 810+360	Ø12"	14-16"	3	2	85
	ESR-32XC	1750 x 1000 x 810+360	Ø12"	14-16"	3	2	85

Options

Available depth version: A = 1000mm B = 900mm C = 750mm X = Compact Width
Overall Size will be further reduced if depth increase.

	Voltage	IN↓	OUT↓	IN↓ LPG / Natural Gas	IN↓ Town Gas	Certification
1 head	220V/SPN/130W	DN15	DN40	DN20	DN20	<p>Please refer to P.171-172 for corresponding certification model</p>
2 heads	220V/SPN/130W x 2	DN15	DN40	DN20	DN20	
3 heads	220V/SPN/130W x 3	DN15	DN40	DN40	DN40	



FLAME
- MATER
STEAMERS
SERIES



S M A R T
S T E A M I N G
C O N C E P T

Combination of Automation and Ultra Transparent Viewing Experience

With the new concept of Smart Steaming Concept, all steam cabinets automatically detects and adjust the best steam output to prevent overcook and wastage of energy. Transparent glass door and advance technology allows full observation of steaming process without any condensation.



Scan for Video

Environmental Steam Cabinet

Smart Steaming Concept



Scan for more details of Smart Steaming Concept and Glass Door performance.



ESC-1VJ



ESC-2VJ



ESC-2HJ



ESC-3HJ



ESC-3HG



ESC-2BJ

	Code	Dimension (mm)	No. of Shevling	Pans Type & Qty	Gas (kW)
1 Deck	ESC-1VJ	800 x 880 x 1800	8	GN2/1 ; 8	42
2 Decks	ESC-2HJ	900 x 880 x 1765	4	GN2/1 : 4	42
	ESC-2VJ (GN Pan)	800 x 880 x 1800	-	GN2/1 : 6	42
3 Decks	ESC-3HJ (900mm)	900 x 880 x 1900	4	GN2/1 : 4	42
	ESC-3HG (Glass Door)	900 x 880 x 1900	4	GN2/1 : 4	42
	ESC-3XJ (1200mm)	1200 x 880 x 1900	4	GN2/1 : 6	56
Butterfly open	ESC-2BJ	1150 x 880 x 1800	-	400 x 600mm ; 20	50

	Voltage	IN ↓	OUT ↓	IN ↓ LPG / Natural Gas	IN ↓ Town Gas	Certification
All Models	220V/SPN/25W	DN15	DN40	DN20	DN25	
ESC-3HG	220V/SPN/1100W	DN15	DN40	DN20	DN25	<p>Please refer to P.171-172 for corresponding certification model</p>

Environmental Trolley Steam Cabinet



ESC-1RC



Roll in version are equipped with double layered glass for safety hazards while improving operation efficiency through built-in GN trolley to reduce the work of transferring between machines.

	Code	Dimension (mm)	GN Trolley	Pans Type & Qty	Gas (kW)
Roll-in	ESC-1RC	1250 x 880 x 1800	GN 2/1 Trolley x 1	GN2/1 ; 13	50

	Voltage	IN ↓	OUT ↓	IN ↓ LPG / Natural Gas	IN ↓ Town Gas	Certification
All Models	220V/SPN/3.05kW	DN15	DN40	DN20	DN25	

Environmental Steamer



ECS-1C



ERS-2C



ECS-2C

	Code	Dimension (mm)	No. of Steam Head	Capacity	Gas (kW)
Dimsum Steamer	ECS-1C ¹	900 x 1050 x 810+360	1	70 bamboo baskets per steam head	42
	ECS-2C ¹	1500 x 1050 x 810+360	2		56
Rice Roll Steamer	ERS-2C	1200 x 1050 x 810+360	1	Built-in rice roll pan (51 x 37cm x 2nos)	42

¹ Optional accessories for including 7 hole plate w/ SS stand, full set dimsum tray, rice roll pan (single / double pan), specify when ordering.

	Voltage	IN ↓	OUT ↓	IN ↓ LPG / Natural Gas	IN ↓ Town Gas	Certification
All Models	220V/SPN/25W	DN15	DN40	DN20	DN25	<p>Please refer to P.171-172 for corresponding certification model</p>

Environmental Kettle Type Steamer

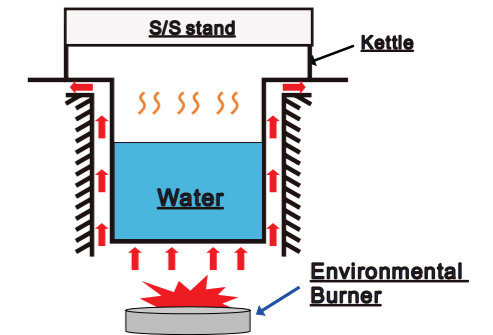


EKS-1E



EKS-2E

Principle Diagram



Kettle type steamer applies pre-mixed burner theory through multi-function of steaming or boiling targeting limited kitchen space.

	Code	Dimension (mm)	No. of Kettle	Kettle Size	Gas (kW)
Kettle Type	EKS-1E	1250 x 1050 x 810+360	1	Ø23" x 16"	42
	EKS-2E	2200 x 1050 x 810+360	2	Ø23" x 16"	84

Optional accessories including 7 hole plate w/ SS stand, full set dimsum tray, rice roll pan (single / double pan), specify when ordering.

	Voltage	IN ↓	OUT ↓	IN ↓ LPG / Natural Gas	IN ↓ Town Gas	Certification
1 head	220V/SPN/130W	DN15	DN40	DN20	DN25	
2 heads	220V/SPN/130W x 2	DN15	DN40	DN40	DN40	



FLAME
-MATE
COMPANY
YAKI
& SOUP
COOKING
RANGE

FLAME



TURBO SOUP
COOKING
EXPERIENCE

**EPS Series: 50%+ Faster
Than Classic Version**

EPS Series applies booster technology to reduce soup cooking duration. This feature is great to accommodate ingredients which have a shorter cooking time.

Open Flame Range



Stove Pot Stove with Cannon burner (Left) for normal soup preparation. To meet with turbo cooking demand, we have a booster version with environmental energy saving features (Right), which can speed up 50%+ cooking time.



OFR-4-DF(S)



The inner ring and outer ring of each burner are controlled by a single gas valve. Options are available to apply control mechanism in each individual ring.

	Code	Dimension (mm)	Gas (kW)	No. of Burner
6" Single Ring Burner	OFR-4-BF(S)	900 x 760 x 810 + 150	20	4
	OFR-6-BF(S)	900 x 760 x 810 + 150	30	6
7" Double Ring Burner	OFR-4-DF(S)	900 x 900 x 810 + 150	28	4
	OFR-6-DF(S)	1200 x 900 x 810 + 150	42	6

Stock Pot Stove & Soup Kettle



SPS-1-14F(S)



EPS-1-F



ECK-1E

	Code	Dimension (mm)	Gas (kW)	No. of Burner
8" Single Ring Burner	SPS-1-8F(S)	550 x 650 x 500 + 200	14	1
	SPS-2-8F(S)	1100 x 650 x 500 + 200	28	2
	SPS-2-8V(S) ¹	550 x 1100 x 500 + 200	28	2
14" Double Ring Burner	SPS-1-14(F)	600 x 760 x 500 + 200	24	1
	SPS-2-14F(S)	1200 x 760 x 500 + 200	48	2
	SPS-2-14V(S) ¹	600 x 1250 x 500 + 200	48	2
Air Blast Type	EPS-1-F	600 x 760 x 540 + 200	28	1
	EPS-2-F	1200 x 760 x 540 + 200	56	2
Kettle Type	ECK-1E	1400 x 1250 x 810 + 360	48	1, 280L

¹ Vertical version

	LPG / Natural Gas	Town Gas	Certification
All Models	DN25	DN25	KGS

	Voltage	LPG / Natural Gas	Town Gas	Certification
SPS Series	-	DN20	DN20	<p>Please refer to P.171-172 for corresponding certification model</p>
EPS Series	220V/SPN/130W	DN20	DN20	



FLAME - MATÉ ROTISSERIES SERIES



REVOLUTION ON AUTOMATION & PROGRAM CONTROL

Standardization & Precise Control For Roasting

Hiring an experience chef becomes more challenging, hence, we are analyzing a program with automated function to mitigate error and increase precision of cooking process.



Duck Roaster



CDR-8DF / CDR-9DF



CDR-10F



All roaster comes with stone base (Left) for preventing burner clogging by grease. To enhance insulation effect, all double layer model comes with another mild steel layer (Right) to further boost up chamber temperature and sustain heat.

	Code	Dimension (mm)	Gas (kW)	Capacity	
				Duck	Pig
Single Layer	CDR-8SF	Ø 810 x 1400	16	6 - 7	-
	CDR-9SF	Ø 910 x 1500	16	8 - 9	-
Double Layer	CDR-8DF	Ø 810 x 1400	16	6 - 7	-
	CDR-9DF	Ø 910 x 1500	16	8 - 9	-
Full Height - Double Layer	CDR-10F	Ø 1000 x 1900	28	11	4

	Voltage	Gas		Certification
		LPG / Natural Gas	Town Gas	
All Models	220V/SPN/25W	DN20	DN20	<p>Please refer to P.171-172 for corresponding certification model</p>

Pig Roaster



Scan for more details of pig roasting automation & programmable functions.



CPR-116WR



CPR-096WF



Pig rotating automation is the best solution for sustaining food quality and reduce man power. The fork can turn 360 degree and move up or down accordingly.

	Code	Dimension (mm)	Gas (kW)	No. of Burner
Manual 1 Pig	CPR-096WF	620 x 900 x 600	36	3
Manual 2 Pigs	CPR-098WF	850 x 900 x 600	60	5
Auto Rotating	CPR-116WR	620 x 1155 x 1000	50	6

	Voltage	Gas		Certification
		LPG / Natural Gas	Town Gas	
Manual	N/A	N/A	N/A	
Auto Rotating	220V/SPN/235W	DN15	DN20	<p>Please refer to P.171-172 for corresponding certification model</p>

Show Kitchen Roaster



CDR-125W



CDR-9NR



Both models come with auto-rotation function with double layered glass for even roasting result. Up to 20 sets of roasting programme is enabled for a variety of recipes.

	Code	Dimension (mm)	Gas (kW)	Capacity Duck	Capacity Full Height Pig
Uplifting Version - Glass	CDR-9NR	956 x 1195 x 2300	25	8 - 12	-
Cabinet Version	CDR-125W	1250 x 1176 x 1900	24	8	4

	Voltage	IN	OUT	LPG / Natural Gas	Town Gas	Certification
Uplifting	380V/TPN/210W	DN15	DN20	DN25	DN25	KGS
Cabinet	220V/SPN/145W	N/A	DN20	DN25	DN25	

Stone Hearth Oven



CPO-120R



CPG-120R



CPG-160W



CPD-120R



CPD Series are fitted with a S/S base for water reservoir to continuously drain grease. With excellent burner, wood rack and auto rotation design, can maintain the duck tenderness and juiciness.

	Code	Dimension (mm)	Gas (kW)	Stone Base Size (mm)	Capacity
Pizza Oven	CPO-120R	Ø 1200 x (1500 + 460)	14 + 8 = 22	Ø 990	36pcs / hr
Grill Oven	CPG-120R	Ø 1200 x (1500 + 460)	9	Ø 990	400 x 600mm rack for meat
Dual Mouth Oven	CPG-160W	1600 x 1400 x (1500 + 460)	9 + 14 - 8 = 31	1400 x 1200	36pcs / hr
Peking Duck Oven	CPD-120R	Ø 1200 x (1800 + 460)	20	-	8 Ducks
	CPD-120RR	Ø 1200 x (1800 + 460)	20	-	8 Ducks

	Voltage	IN	OUT	LPG / Natural Gas	Town Gas	Certification
All Models	220V/SPN/25W	DN15	DN20	DN20	DN20	KGS

Round Grill



CGR-150R
(Custom: 1/2 Grill +
1/2 Griddle)



CGG-150R



S/S grill grating and fitted with bar burners at the bottom.

	Code	Dimension (mm)	Gas (kW)	Grilling Area (mm)	Skewer (pcs)
Full Grill	CGR-150R	Ø 1500 x 900	38	Ø 900	Optional
1/2 Grill + 1/2 Griddle	CGG-150R	Ø 1500 x 900	32	Ø 900	4

	Voltage	LPG / Natural Gas	Town Gas	Certification
All Models	220V/SPN/160W	DN20	DN20	KGS

Tandoor Oven



CTO-100RT



CTO-090WT / CTO-100WT



CTO-100BT

	Code	Dimension (mm)	Gas (kW)	Internal Clay Size (mm)
Rectangular	CTO-090WT	950 x 950 x 900	16	Ø 762
	CTO-100WT	1000 x 1000 x 900	16	Ø 834
Cylinder	CTO-100RT	Ø 980 x 900	16	Ø 834
Barrel	CTO-100BT	Ø 1000 x 900	16	Ø 762

All tandoor comes with S/S hook, spade and lid.
Charcoal version is available upon request.

	LPG / Natural Gas	Town Gas	Certification
All Models	DN20	DN20	KGS

T Teppanyaki Station



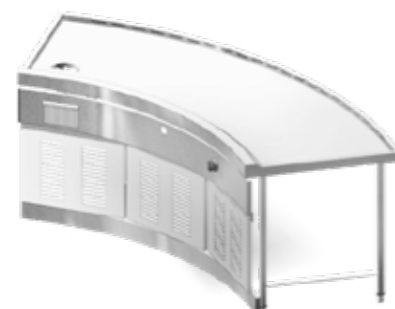
S-07G / S-08G / S-09G



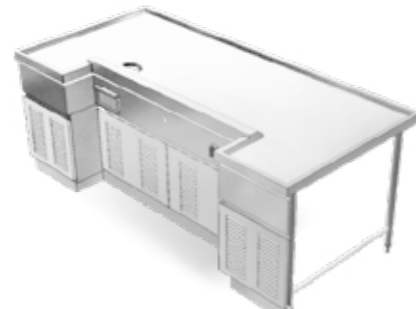
R-08G



With optional design for downdraft system and air curtain, fume will trapped within the cooking area only.



B-12G



U-13G

	Code	Dimension (mm)	Gas (kW)	Capacity (Persons)	Options
Rectangular	S-07G	1200 x 800 x 810	9	7	<ul style="list-style-type: none"> Center Heating Zone (Default) Multizone Heating Control Downdraft System Air Curtain Chrome Plate Griddle (19mm) Cabinet Base Refrigeration Drawer Base
	S-08G	1500 x 800 x 810	9	8	
	S-09G	1800 x 800 x 810	9	9	
Oval	R-08G	1800 x 800 x 810	9	8	
Sector	B-12G	2400 x 800 x 810	9	12	
Hoof	U-13G	2100 x 1000 x 810	9	13	

	LPG / Natural Gas	Town Gas	Certification
All Models	DN20	DN20	
Others	Ducting for downdraft system is not included. Specify all required options when ordering		

Japanese Grill Station



ROG-120W / ROG-150W



YAG-090W / YAG-120W / YAG-150W

	Code	Dimension (mm)	Gas (kW)	No. of Burner	Adjustable Rack (mm H)
Yakatori	YAG-090W	900 x 350 x 365	10	682 x 232	-
	YAG-120W	1200 x 350 x 365	14	982 x 232	-
	YAG-150W	1500 x 350 x 365	18	1282 x 232	-
Robotayaki	ROG-120W	1200 x 650 x 365	24	1093 x 485	350
	ROG-150W	1500 x 650 x 365	32	1393 x 485	350

Charcoal version is available upon request.

	LPG / Natural Gas	Town Gas	Certification
All Models	DN20	DN20	