



SO INOX

segaossa bone saws



INDUSTRIA 4.0

- Costruzione in acciaio inox AISI 304.
- Cassetto raccogliresti interbloccato e accessibile dall'esterno (non su mod. Start).
- Sportello facilmente rimovibile per agevolare la pulizia (non su mod. Start).
- Pulegge calibrate costruite in alluminio brillantato.
- Cuscinetti ermetici su puleggia superiore.
- Potenti motori asincroni e ventilati protetti con paraolio di tenuta.
- Comandi 24V con micro di sicurezza su porta e cassetto, centralina di controllo ridondante e freno motore (CE).
- Rapido sblocco puleggia superiore agevola la pulizia e il cambio lama.
- Raschiatori facilmente rimovibili e sostituibili.
- Potenti motori a 6 e 8 poli sviluppano grande forza con poco assorbimento (SO2400 e SO3100).
- Motori monofase con protezione termica di serie.
- Lavabili con spruzzo d'acqua (no alta pressione).
- Comandi in acciaio inox IP 67.
- Utilizzano lame temperate da 16 mm per taglio di ossa, congelato e fresco.

Opzioni:

- Carrello scorrevole (SO 2020-2400-3100).
- Puleggia SO2400 con bordatura in acciaio inox AISI 304.
- SRCS Scheda di controllo remoto

- *AISI 304 stainless steel body.*
- *Interlocking scrap pan accessible from the outside (not on model Start).*
- *Easily removable door to facilitate cleaning (not on model Start).*
- *Calibrated pulleys made of polished aluminium.*
- *Sealed bearings on upper pulley.*
- *Powerful asynchronous and ventilated motors protected by lip seals.*
- *Controls (24 V) with safety micro-switch on door and pan, redundancy control unit and motor brake (CE).*
- *Upper pulley with quick-release mechanism to facilitate cleaning and blade change.*
- *Easily removable and replaceable scrapers.*
- *Powerful 6- and 8-pole motors generate considerable force with limited power input (SO2400 and SO3100).*
- *Single-phase motors with standard thermal protection.*
- *Washable with water jet (no high pressure).*
- *IP 67 stainless steel controls.*
- *Equipped with 16 mm tempered blades for cutting bones, frozen foods and fresh foods.*

Optionals:

- *Sliding carriage (SO 2020-2400-3100).*
- *SO2400 pulley with AISI 304 stainless steel edging.*
- *SRCS wifi control board*



SO 3100 INOX



SO 2400 INOX



Cassetto raccolta scarti facilmente estraibile per la pulizia

Removable wastage tray for easy cleaning.



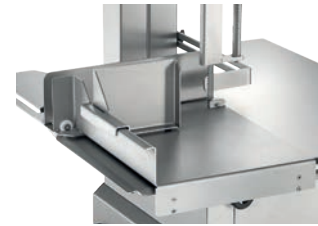
Raschiatori lama in materiale plastico alimentare ad innesto rapido. Flangia in materiale plastico alimentare nero a tenuta stagna per protezione motore

Alimentary plastic blade scraper in quick to insert. Watertight black plastic flange to protect the motor



Pulegge superiori ermetiche

Hermetic upper pulleys



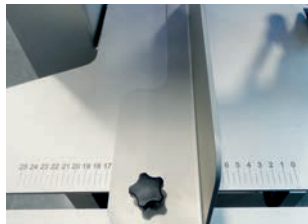
Piano scorrevole opzionale

Optional sliding table



Tensionamento lama automatico

Automatic blade tensioning



Scala graduata sul piano di lavoro

Worktop with graduated scale



SO 2400 INOX SX



Piano scorrevole opzionale ribaltabile

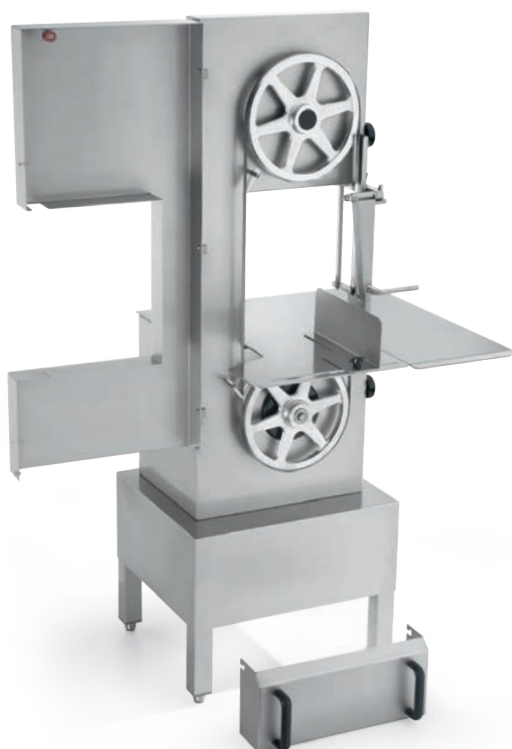
Optional sliding table folding



SO 1650-1840 START



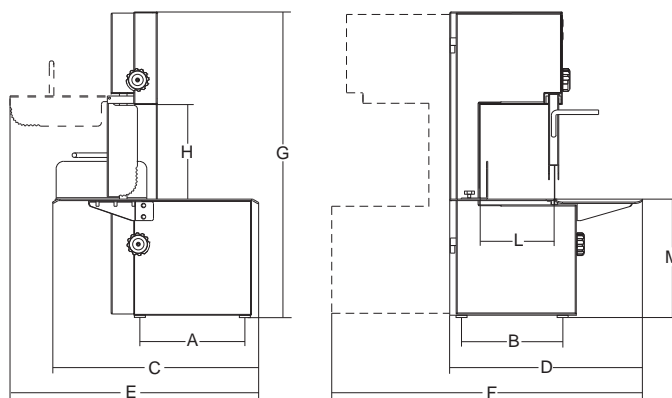
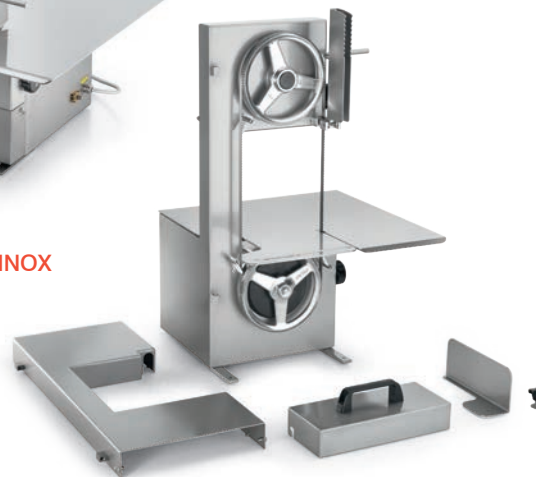
SO 2020 INOX P



SO 2400 INOX



SO 1650 INOX



	mm	Hp/r.p.m.	mm	mm	mm	mm	mm	mm	mm	mm	mm	mm	mm	mm	kg	mm	kg
SO 1650 Inox Start	1650	1ph 1,5/1.400 3ph 2/1.400	210	415x470	315	314	535	520	640	862	815	249	197	320	46	570x720x1020	58
SO 1840 Inox Start	1840	1ph 1,5/1.400 3ph 2/1.400	250	455x470	315	334	537	560	640	923	843	249	237	320	51	570x720x1020	63
SO 2020 Inox Start	2020	1ph 1,5/1.400 3ph 2/1.400	250	475x490	253	346	568	560	710	930	1030	290	236	362	61	570x720x1020	73
SO 1650 Inox	1650	1ph 1,5/1.400 3ph 2/1.400	210	430x545	342	296	545	510	658	840	816	249	197	320	47	570x720x1020	59
SO 2020 Inox	2020	1ph 1,5/1.400 3ph 2/1.400	250	475x490	253	346	568	560	710	930	1030	290	236	362	61	760x640x1430	73
SO 2020 Inox P	2020	1ph 1,5/1.400 3ph 2/1.400	250	475x490	467	411	568	603	710	930	1650	290	236	980	70	760x640x1750	82
SO 2400 Inox	2400	1ph 2,9/0 3ph 2,4/900	300	575x705	444	524	715	750	840	1170	1670	350	287	897	115	1050x950x1960	125
SO 3100 Inox	3100	3ph 2,5/700	400	795x830	444	624	840	966	950	1485	1900	420	388	947	170	1050x950x1960	195